



LEEWARD COMMUNITY COLLEGE



SUMMARY

Leeward Community College was outgrowing its homegrown curriculum management solution. With Quali Curriculum Management, Leeward significantly enhanced the user experience for faculty and admins and delivered improved curriculum for students.



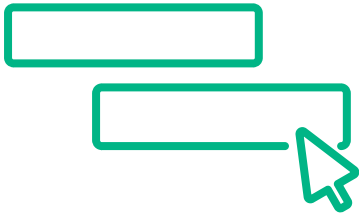
PROBLEM: PAPER-BASED RESEARCH PROCESSES

Leeward Community College, a public institution located on the Hawaiian island of O'ahu, used a homegrown system to manage its curriculum. This system filled their needs; however, it had issues. Administrators and faculty had limited visibility into their proposal status; it was difficult to find dependencies between learning outcomes, courses, and programs; and it required a lot of manual effort during the proposal, review, and approval process. Also, the solution was developed in the early 2000s, built on technology from the mid-'90s.

Leeward needed a new solution, built on new technology, to facilitate a better curriculum for the students they served.

quali
STUDENT

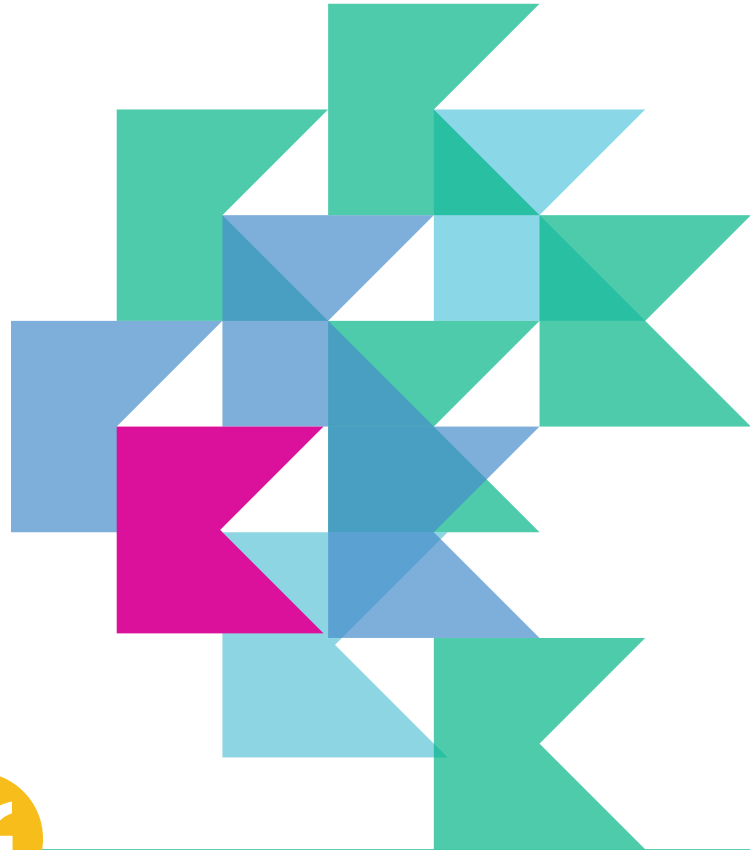
TRANSFORM PROCESSES. ELEVATE IMPACT.



SOLUTION: EMBRACING NEW TECHNOLOGY

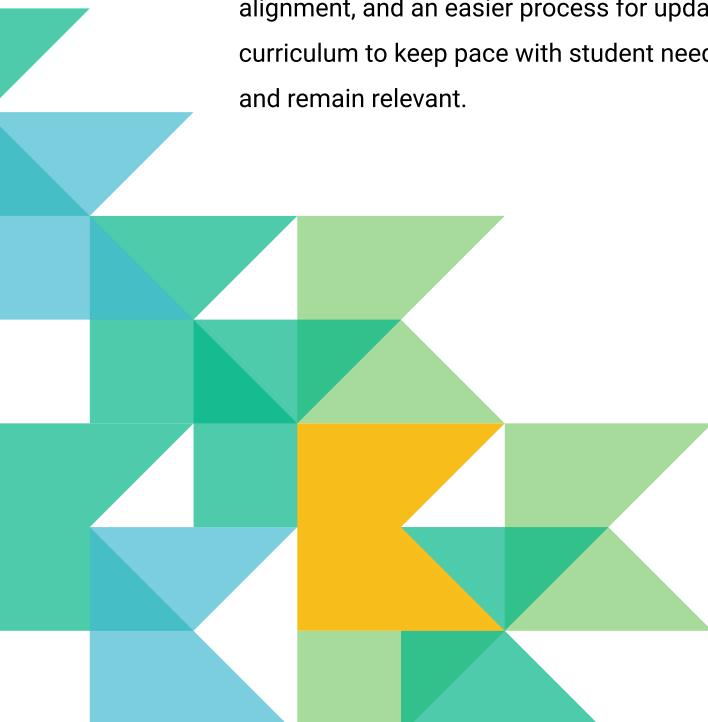
In 2014, Leeward Community College migrated to Kuali Curriculum Management. Petersen Gross, Leeward Community College Curriculum Committee Chair, has led Leeward's long history of partnership with Kuali, including testing during the development of new features, providing feedback on functionality, and even visiting the Kuali office to discuss customer needs.

By partnering with Kuali, Leeward benefited from updated, cloud-based software and also found a vendor-partner they could trust. Kuali helped them with the specific challenges they faced as a community college, like prerequisite and dependency analysis around sub-100 level courses, increased visibility into the University of Hawaii system curriculum for improved alignment, and an easier process for updating curriculum to keep pace with student needs and remain relevant.



"Dependency analysis makes it so much easier to help students go through their program and it has implications for financial aid."

**PETERSON GROSS
CURRICULUM CHAIR
LEEWARD COMMUNITY COLLEGE**

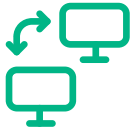


kuali
STUDENT



RESULTS: A PATHWAY TO IMPROVED CURRICULUM

Kuali Curriculum Management opened new doors for Leeward.



HIGHLIGHTING HIDDEN DEPENDENCIES

Dependency and Prerequisite Analysis provided a significant improvement for Leeward. As a community college, Leeward offers more sub-100 level and pre-requisite courses than other campuses in the University of Hawaii System. With Prerequisite Analysis, it is easier to manage changed or deleted courses—and it's easier to see what else needs to be updated.

Leeward also uses the Dependency and Prerequisite Analysis to help advisors and students understand possible hidden prerequisites that may not be easily discovered by reviewing the program requirements (though, this is something the Curriculum Committee is working to eliminate).



IMPROVING PROPOSAL REVIEWS

In addition to Dependency Analysis, administrators can easily see the difference between proposals with Kuali Curriculum Management's version analysis. Using the homegrown system, administrators were required to list each field they changed. With a 40 question document to review, this manual process took time. Kuali Curriculum Management enabled Leeward to easily view tracked changes, leading to faster reviews, more specific questions during the review process, and a more in-depth understanding of revision history.



Kuali Curriculum & Catalog Management is more efficient, it's easier, it's user-friendly.

PETERSON GROSS
CURRICULUM CHAIR
LEEWARD COMMUNITY COLLEGE

kuali
STUDENT



SAVING TIME

Leeward faculty utilizes better curriculum processes and saves time due to Kuali Curriculum Management's ease of use. Today, administrators create proposals using smart forms with a variety of dynamic field types and data selection options. Additionally, Kuali's updated workflow and user dashboard have also made Gross's job easier—proposers can quickly find what they are looking for, understand where their proposal is in the workflow, and understand if they need to take any action without asking for additional help.



VENDOR PARTNERSHIP

Finally, Leeward partners with Kuali by sharing and learning new methods to improve curriculum management. Years ago, as Leeward considered using Kuali Curriculum Management, Petersen Gross visited the Kuali offices and shared the concept of user impersonation with Kuali developers. This feature was built into the software and today, Kuali's customers regularly utilize this feature. Leeward faculty enjoy working with a vendor that listens and regularly implements features to meet the needs of its customer base.

As Kuali grew, the company learned best practices around curriculum management and shared those insights with Leeward—leading to further improvements in forms, gadgets, and improved usage of their Kuali solution. Petersen Gross and others on the curriculum committee at Leeward Community College look forward to continued use of the Kuali system to provide the best possible curriculum for their students.



See how the Kuali Student Suite can improve your processes today.

LEARN MORE